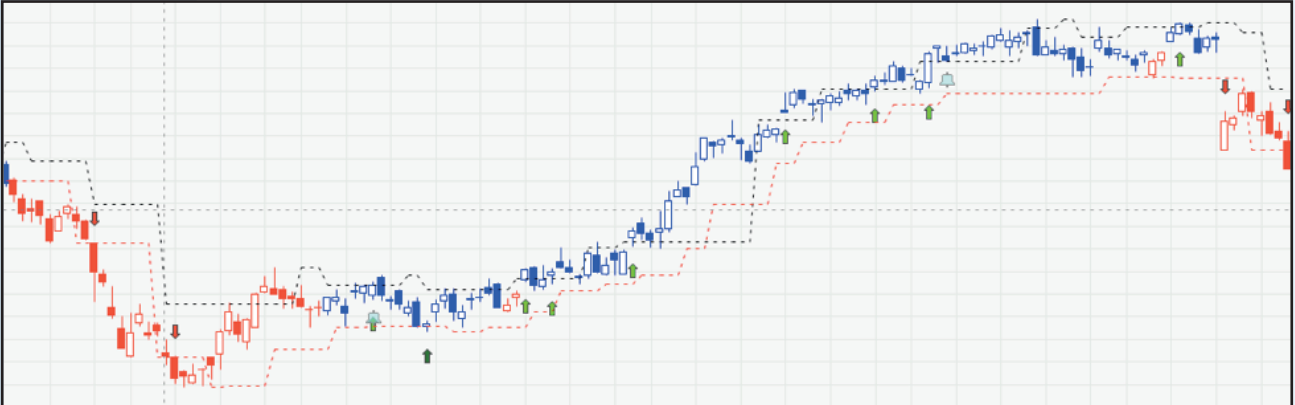


TRADERSGPS®

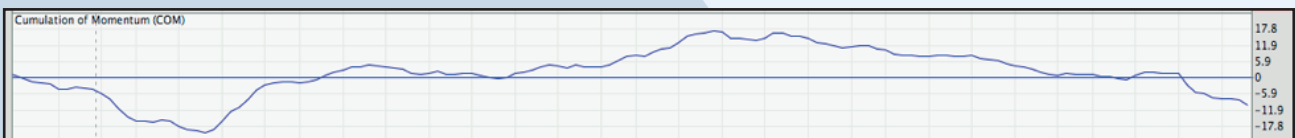
Quick Start Pack ▶

Getting Started

- 1. Determine buying or selling mode** of the stock by looking at the candlesticks colour. Blue candlesticks means bullish, Red candlesticks means bearish.

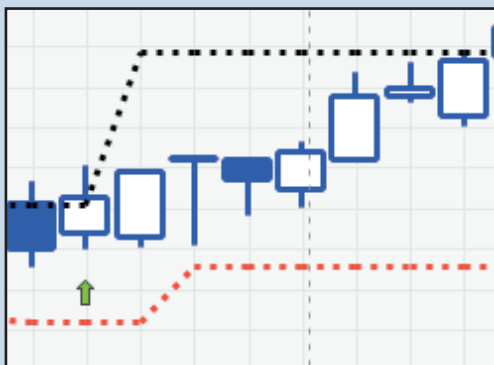


The Cumulation of Momentum (COM) indicator determines the change of mode. If it is above the Zero Line, the candlesticks will turn blue, if below the Zero Line, the candlesticks will turn red.

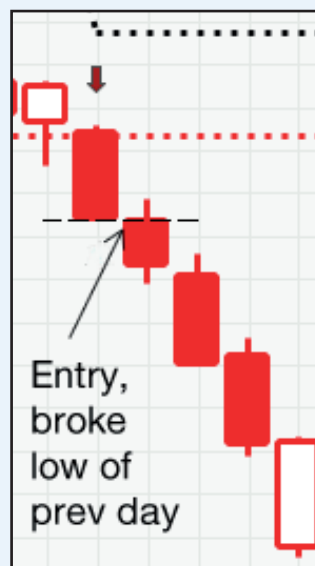
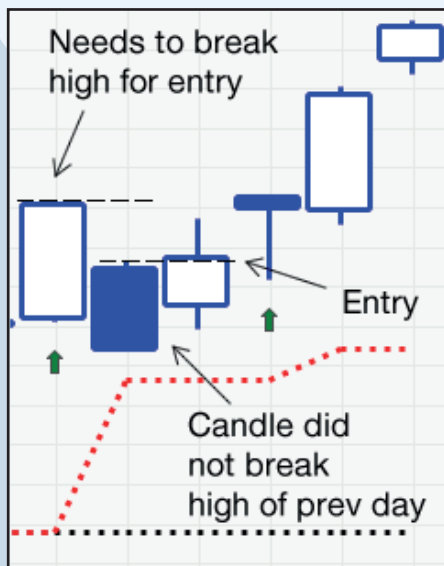


Tip: You may use the (COM) to look for divergences in a stock

- 2. Signal Arrows** show you exactly where to long or short a stock. An Up Green Arrow signifies a Long Signal, whereas a Down Red Arrow signifies a Short Signal.



Look for an **entry opportunity** when prices have broken the high of the signal candle. If prices did not break the high of the signal candle, keep trailing the high of subsequent candles until price trades above the high of the previous candle.



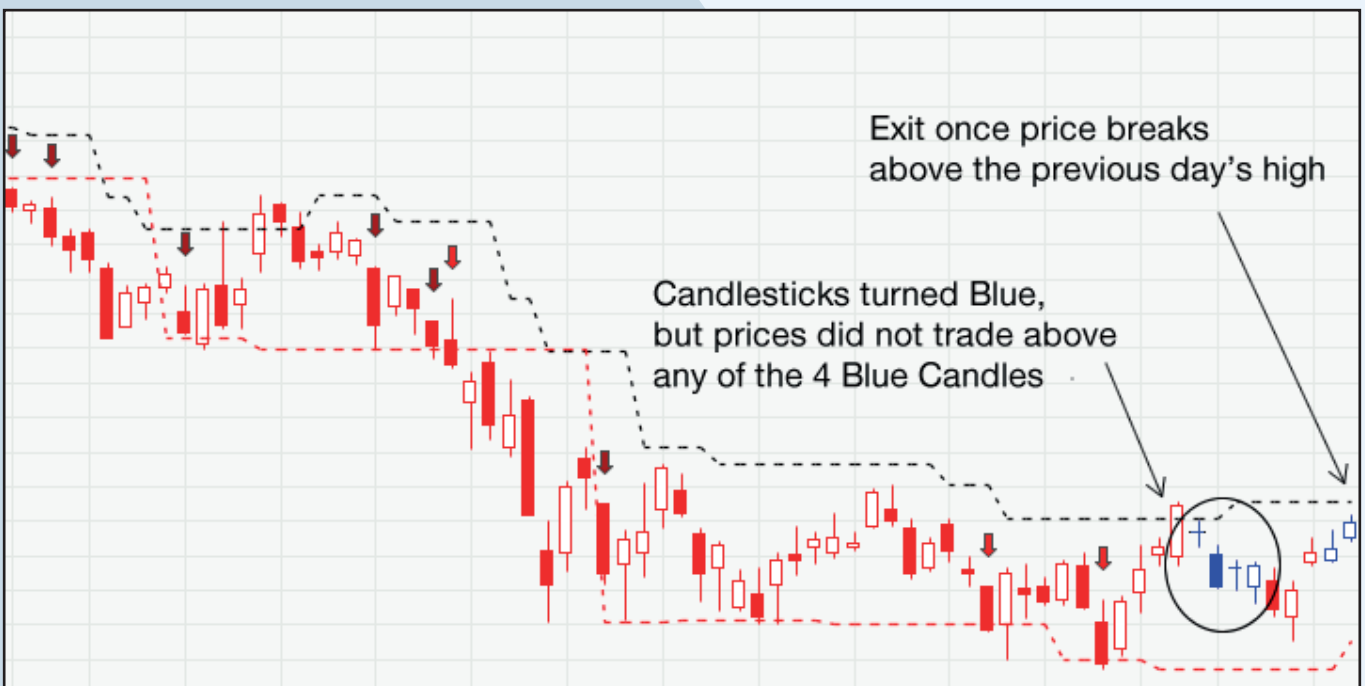
3. The Trend Impulse Factor (TIF) indicates the strength of the Signal Arrows. If the (TIF) is above Zero, it will be painted Blue, if the (TIF) is below Zero, it will be painted Red. For both long and short positions, look for the (TIF) to be Blue to signify trending behaviour.



4. For **Profit Taking (Long Example)**, wait for the candlesticks to change colour - red; and for subsequent candle/candles to trade below the low of the red candlestick.



For **Profit Taking (Short Example)**, wait for the candlesticks to change colour - blue; and for subsequent candle/candles to trade above the high of the blue candlestick.



You may also utilise a **discretionary exit** by using the dynamic support and resistance lines, which are the dotted lines.



5. Use the TradersGPS Screener - Comparative Scan, to help you search for trading candidates. We are basically looking for stocks that are stronger than the overall market to go long, and looking for stocks that are weaker than the overall market to go short.

Symbol	Name	Rule Name	Market Cap	Sector	Industry	Week	Month	Quarter	Volume	Cl
TXG	10x Genomics, Inc.	-	\$20.66B	Healthcare	Health Information Services	-1.9129	-0.6097	-0.0432	552900	18
JOBS	51job Inc	-	\$5.19B	Industrials	Staffing & Employment Services	-0.4564	-0.032	0.1857	743300	77
ATVI	Activision Blizzard, Ir	-	\$71.62B	Communication Services	Electronic Gaming & Multimedia	-0.7846	-0.3435	-0.1571	3444200	93
ADPT	Adaptive Biotechnolo	-	\$5.31B	Healthcare	Biotechnology	-2.6042	-0.626	-0.212	630300	37
ADBE	Adobe Inc.	-	\$289.64B	Technology	Software-Infrastructure	0.5247	0.4975	0.39	2022500	605
AMD	Advanced Micro Dev	-	\$109.48B	Technology	Semiconductors	-1.0225	0.3163	0.2313	51498500	90
AFRM	Affirm Holdings, Inc.	-	\$16.96B	Technology	Information Technology Services	-1.8009	-0.4359	-0.0761	1961400	64
AGNC	AGNC Investment Co	TradersGPS - Sell Sign	\$8.67B	Real Estate	REIT: Mortgage	-0.7818	-0.5548	-0.2701	7102100	16
AKAM	Akamai Technologies	-	\$19.18B	Technology	Software: Infrastructure	-0.0732	-0.1332	0.035	1578900	11
ALXN	Alexion Pharmaceuti	-	\$40.53B	Healthcare	Biotechnology	-0.3491	-0.0755	0.0709	2755900	18
ALGN	Align Technology, Inc	TradersGPS - Buy Sign	\$48.81B	Healthcare	Medical Devices	-0.3429	-0.1267	-0.0316	370800	612
ALGM	Allegro MicroSystem	-	\$5.13B	Technology	Semiconductors	-0.4895	-0.1018	0.0754	625100	27
LNT	Alliant Energy Corpo	-	\$14.21B	Utilities	Utilities-Regulated Electric	0.028	-0.2772	-0.1116	812300	56
ALNY	Alnylam Pharmaceut	-	\$20.27B	Healthcare	Biotechnology	0.1277	0.0413	0.3991	358100	17
GOOGL	Alphabet Inc. - Class	-	\$1.67T	Communication Services	Internet Content & Information	0.3778	0.1159	0.1157	1203000	2529
GOOG	Alphabet Inc. - Class	-	\$1.73T	Communication Services	Internet Content & Information	0.339	0.0613	0.137	834200	2601
AMZN	Amazon.com, Inc.	-	\$1.88T	Consumer Cyclical	Internet Retail	1.2952	0.5025	0.2136	5328100	3666
DOX	Amdocs Limited - Or	-	\$10.21B	Technology	Software-Infrastructure	-0.0569	-0.2422	-0.0679	446500	78

Depending on how long you wish to hold your trades, you may choose the rank the results by day / week / month. By default, we use the **weekly ranking** to find swing candidates. If you prefer stocks with more established trends, you may choose to use the monthly ranking. This is a powerful way to source for ideas in trading.

Additional Information

- 1.** This is just a quick guide to help you get up to speed on using the TradersGPS® System. Please view this [video](#) to get a clearer picture and additional tidbits such as the Position Building Pyramid™.
- 2.** Every main SMT™ Participant will get a complimentary 6-months SMT™ Premium Membership (where it consist of both the TradersGPS and the Premium Members Area)
- 3.** Access to the SMT Premium Membership will be provided via email two days before the course commencement (unless you opt for Early Activation).

You will see a full suite of in-depth videos available in the Premium Members Area for you to gain deeper understanding of the SMT Strategies and the TradersGPS® System.

..... End of Quick Start Pack



The SystematicTrader®

TRADERSGPS®